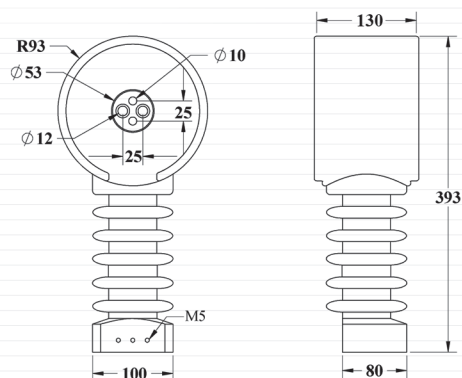


Medium Voltage Bushing Type CTs

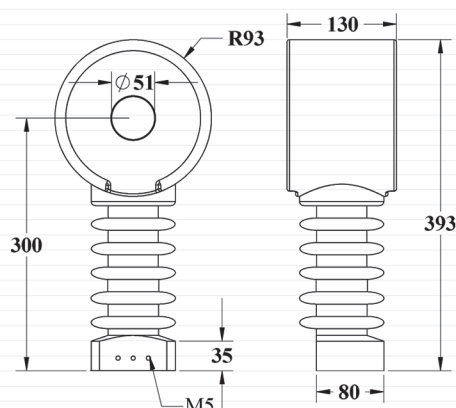
Indoor, Cast Resin Insulated

Technical Specifications

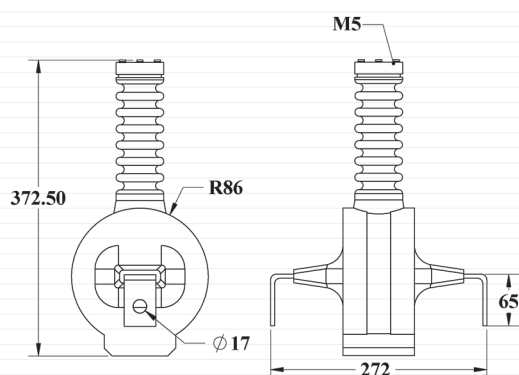
Type		MBR	MBW	MBU
Insulation level	KV	24/50/125	24/50/125	24/50/125
Rated frequency	Hz	50 or 60	50 or 60	50 or 60
Primary current (single ratio or by sec. tap)	A	40-600	40-1500	50-300
Max. rated continuous thermal current		$1.2 \times I_n$	$1.2 \times I_n$	$1.2 \times I_n$
Weight	Kg	11	9	7
Dimensions	mm	Shown on the diagrams		



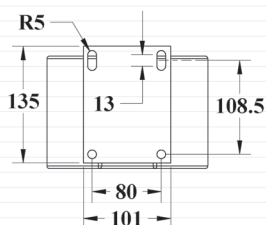
MBR



MBW



MBU



ترانسفورمرهای مدل MBW و MBR جهت نصب در کف (مطابق شکل مقابل)، قابل ارائه با Base plate می باشند.