

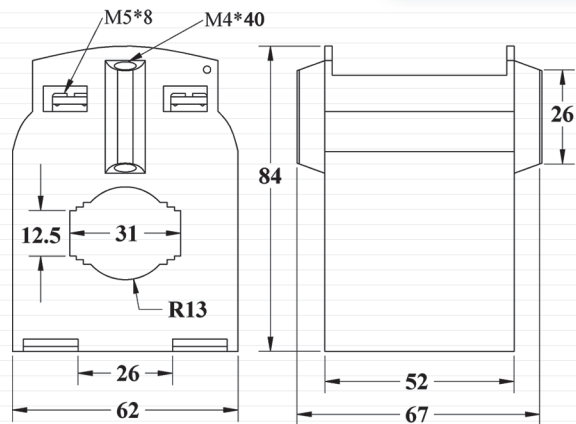
Current Transformers-Low Voltage

LP30

Ratio	Burden (VA)	Class
*50/5,1	2.5,5	0.5,1
*75/5,1	2.5,5	0.5,1
100/5,1	2.5,5	0.5,1
150/5,1	2.5,5	0.5,1
200/5,1	2.5,5	0.5,1
250/5,1	2.5,5	0.5,1
300/5,1	2.5,5	0.5,1
400/5,1	2.5,5	0.5,1

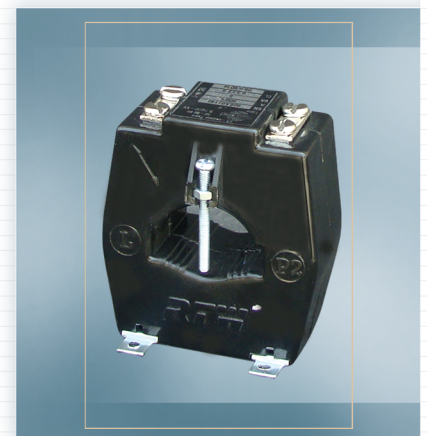


* Only for cable conductors with 2 primary turns



LP40

Ratio	Burden (VA)	Class
400/5,1	2.5,5	0.5,1
500/5,1	5	0.5,1
600/5,1	5	0.5,1
800/5,1	7.5	0.5,1



"Other specifications are available on request"

